



Fire Risk Assessment

The Regulatory Reform (Fire Safety) Order came into force on the 1st October 2006.

If you are an employer, business owner or are in control of a premises the Regulatory Reform (Fire Safety) Order 2005 that came into force 1st October 2006 states that you

“must make a suitable and sufficient assessment of the risks to which relevant persons are exposed”

The role of the Fire Brigade will be to inspect premises and if the regulations are found to have been ignored, or not implemented satisfactorily, they have the power to prosecute under criminal law.

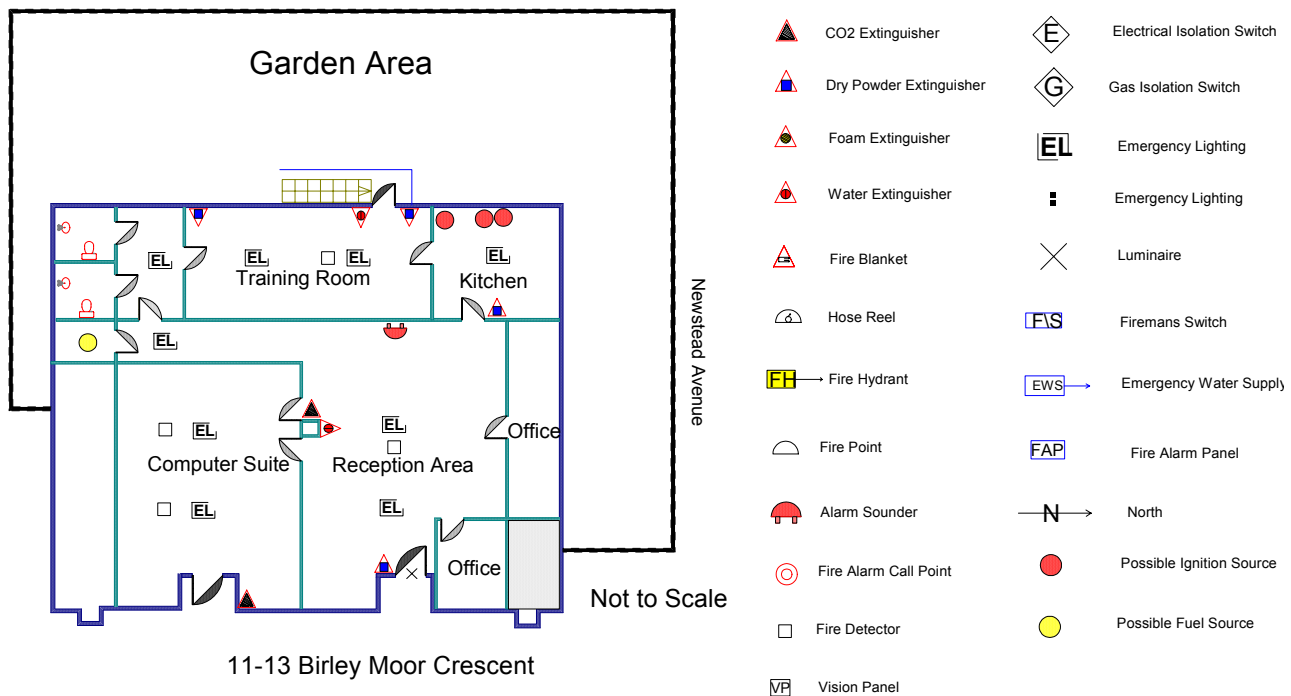
We realise that busy, competitive companies may wish to concentrate their efforts on their business so we have formulated a comprehensive Fire Risk Assessment package suitable for all businesses. This package meets the requirements of the Regulatory Reform (Fire Safety) Order 2005. This Assessment will be carried out on your premises, with minimal disruption to your workforce, allowing you to concentrate on your business and interests.

Protect you and your business by having a Fire Risk Assessment carried out ensuring that you as the “responsible person” comply with current legislation

Fire Risk Assessment Package:
Fire Safety Administration
Identifying the Fire Hazards
Means of Escape
Staff and People at Risk
Fire Warning Facilities

Fire Fighting Facilities
Artificial Lighting
Fire Routine and Test Procedure
Security/Arson Prevention

On completion of the Fire Risk Assessment package, a comprehensive document will be produced and any recommendations made will be highlighted with digital photographic evidence included. A custom designed Computer Aided Design (CAD) drawing can also be put into the package.



“This is a very comprehensive Fire Risk Assessment package - probably the best I have ever seen, and this is the standard that all companies should try to reach” - a recent comment from a Fire Safety Officer from South Yorkshire Fire Service

**THE FIRE TRAINING ACADEMY
— EXCELLENCE IN FIRE SAFETY TRAINING**